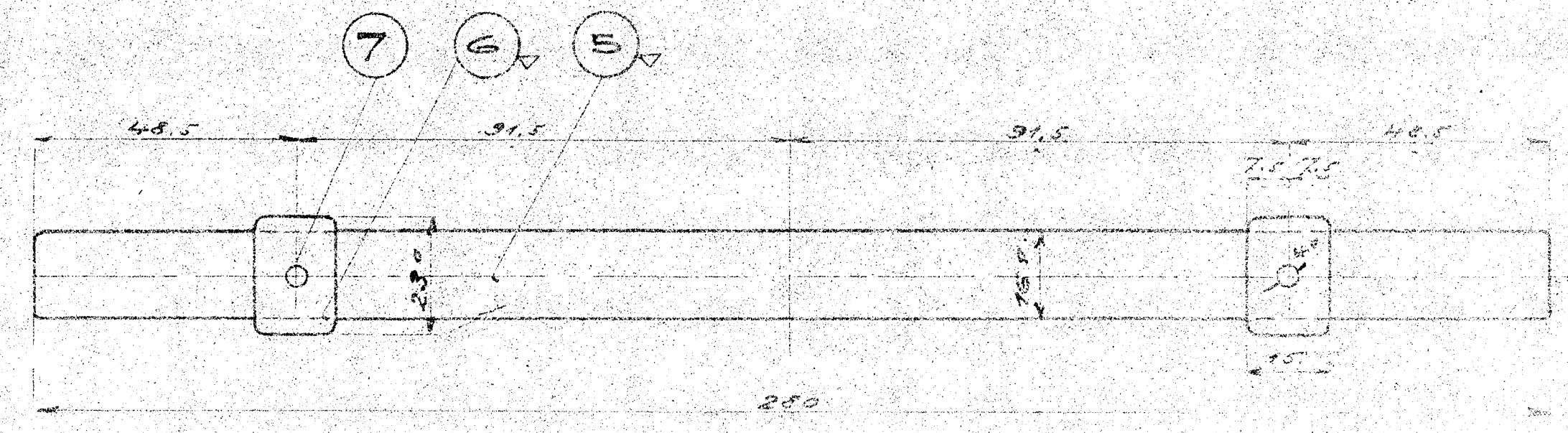
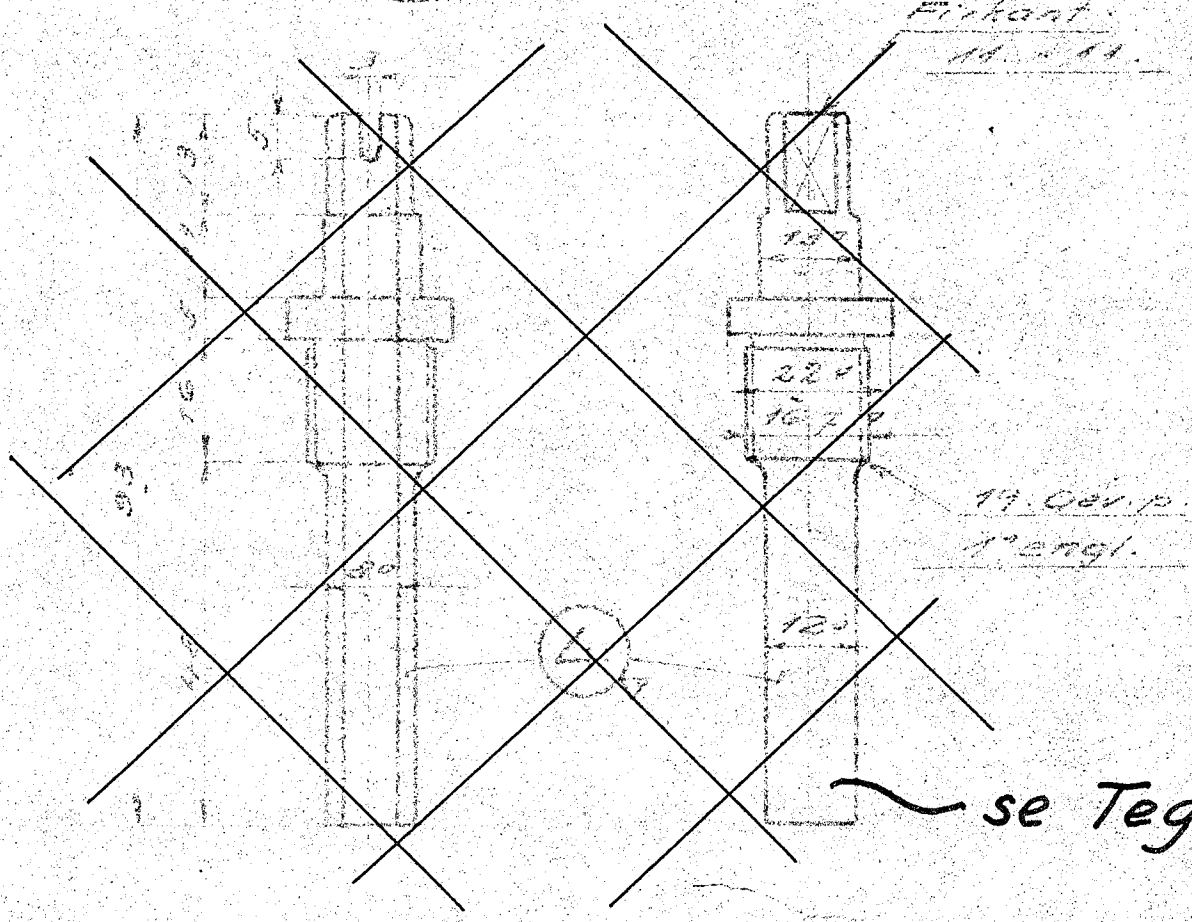
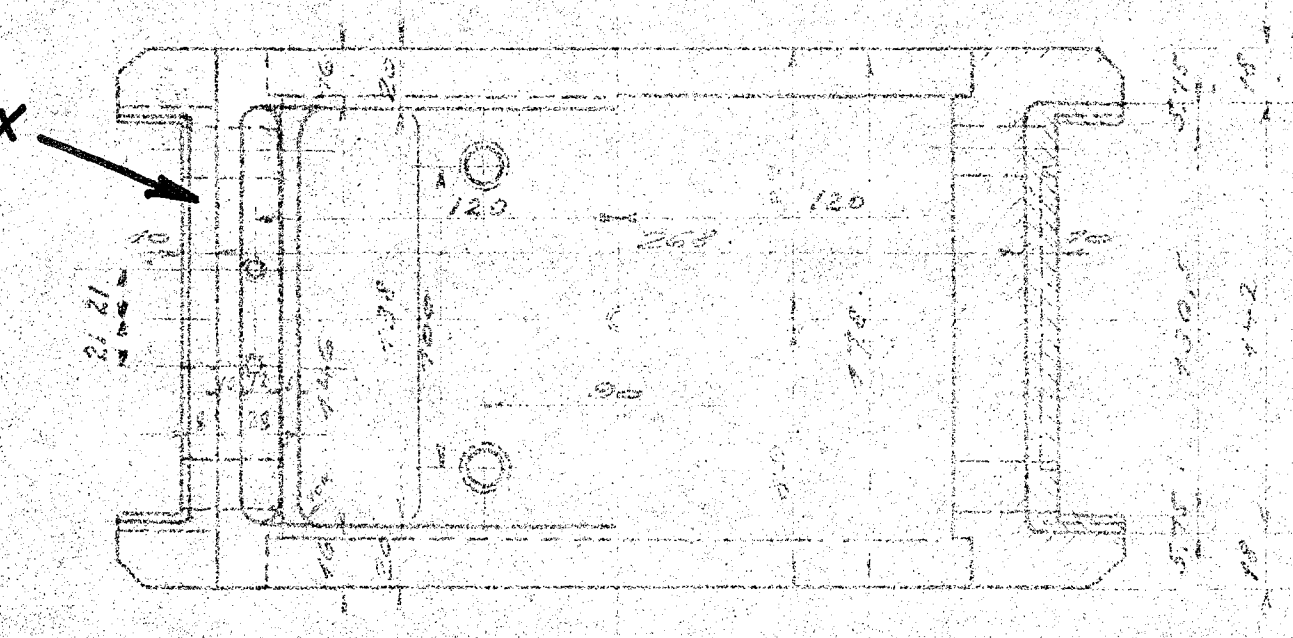
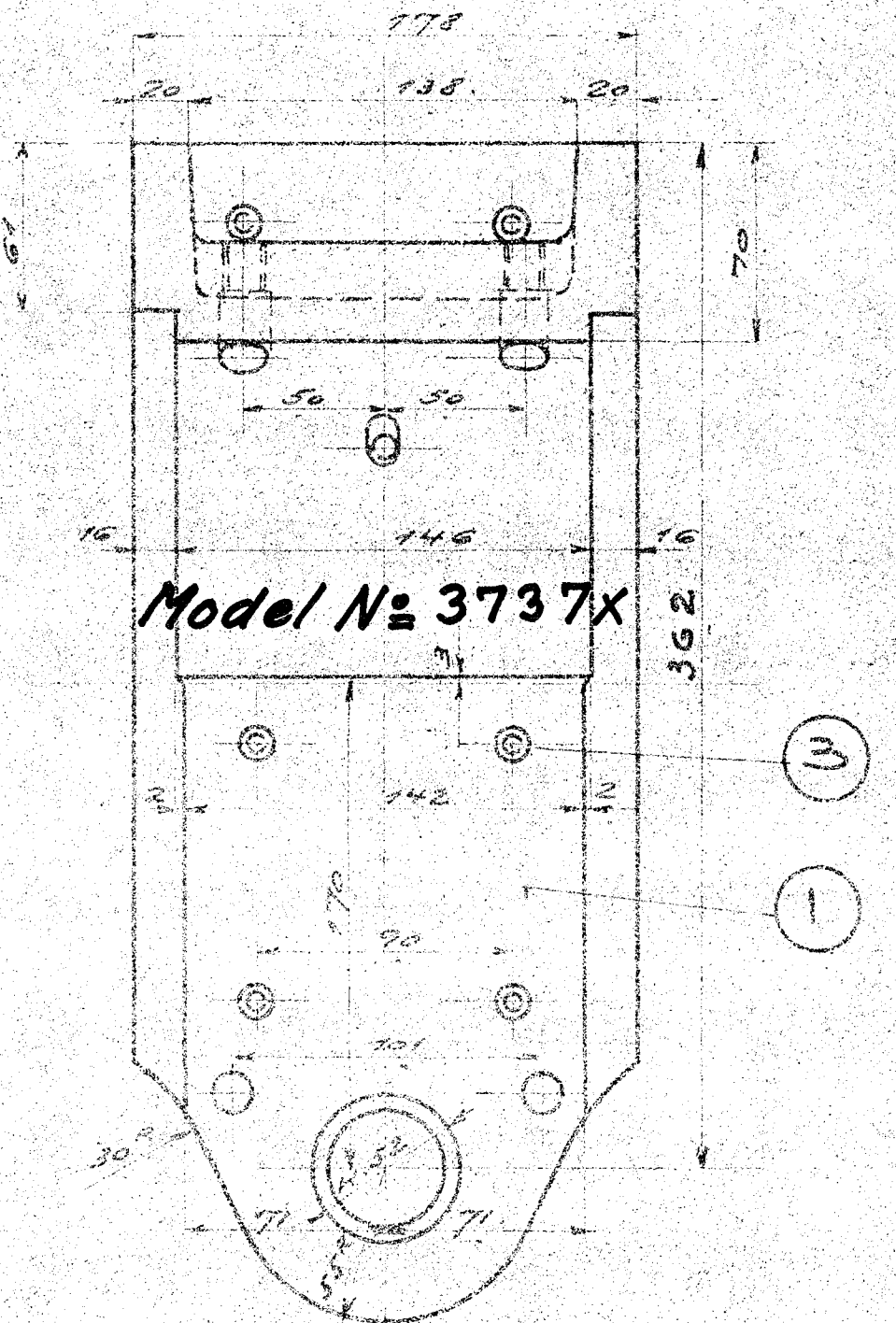
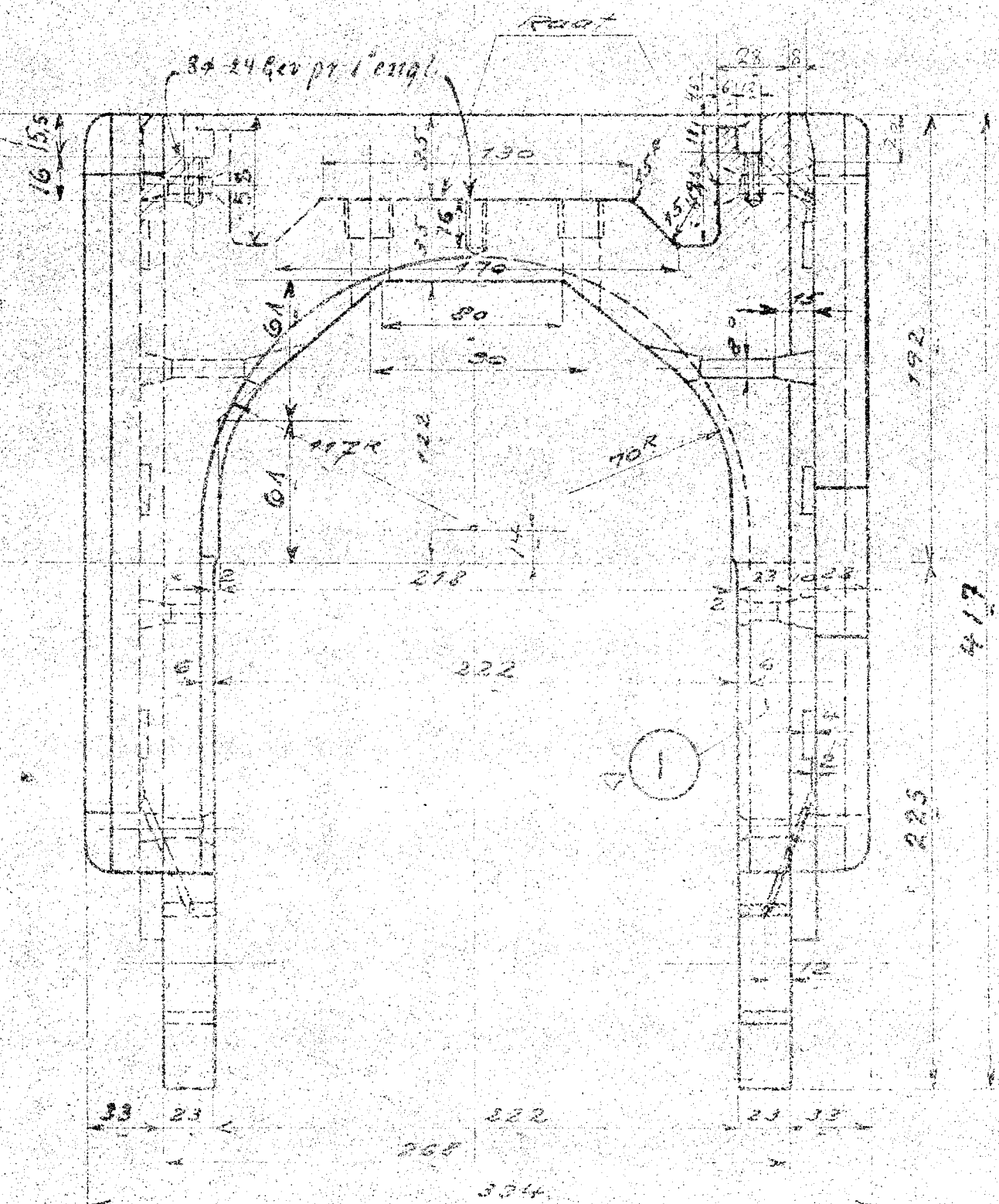
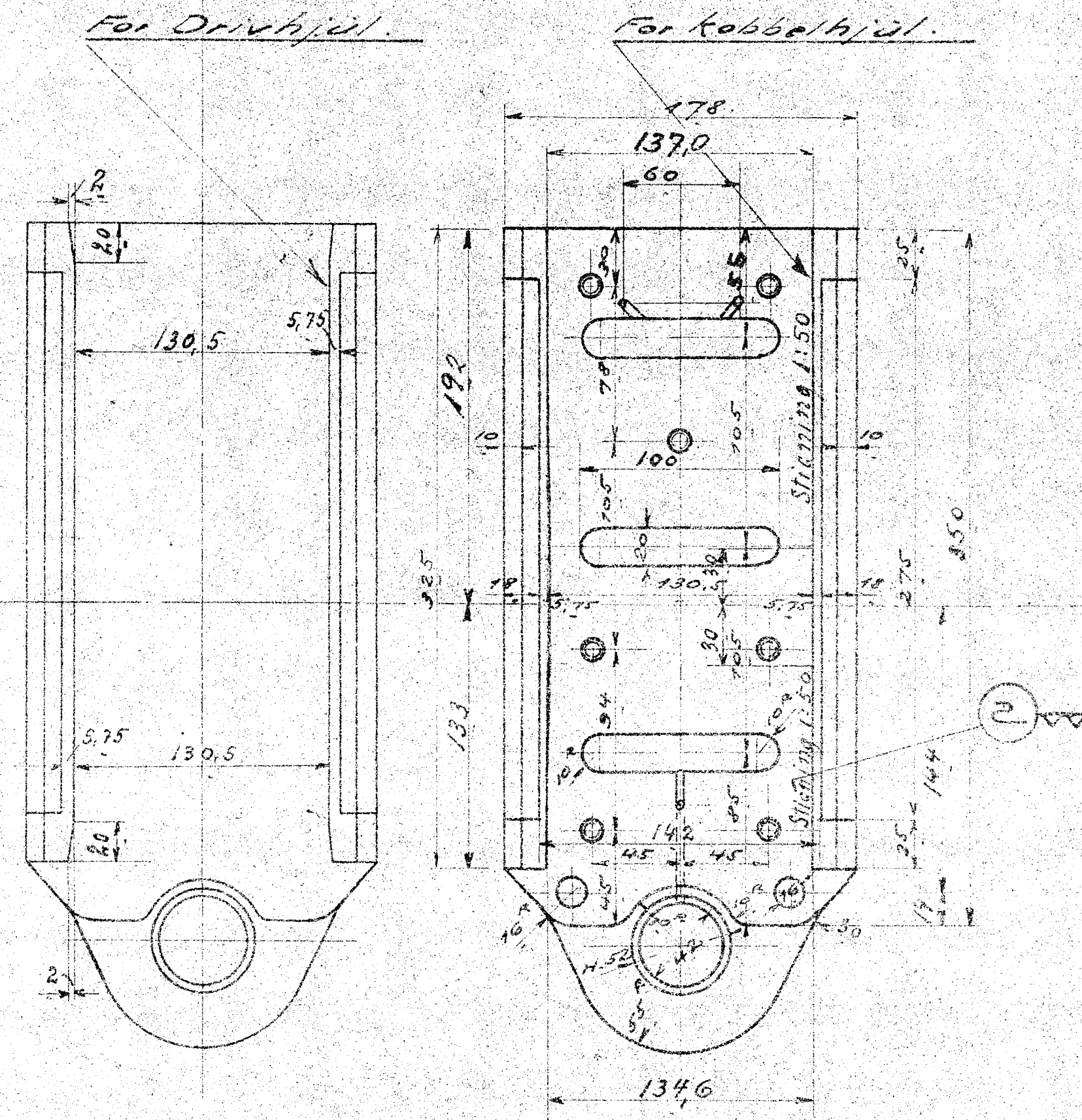


1	6 Akselkasser	Staal	6 L 462
2	18 Gneværte	Lager	462
3	84 Nøvler, forsk. Læng. bøl.	Aut.	85
4	24 Smørestreier	Flæs	240
5	12 Styretappe	Stål	3480
6	24 Skærringe	Flæs	500
7	24 Splittes	Mønst.	
8	24 Smørevæp	Køber	3000
9	18 Bøvinger	Stål No. 42454, 114.2.	



*For Akselkasse med ipresset Pande
se Tegn. Q 59h.*

Hertil hører **III**
plan I & II

Q. 59c.

Akselkasse til Driv- og Kæbbehjul
D. Tenderløkke Litra. Q

18. Oer p. i engl.
se Tegn. N.L. 159 b.